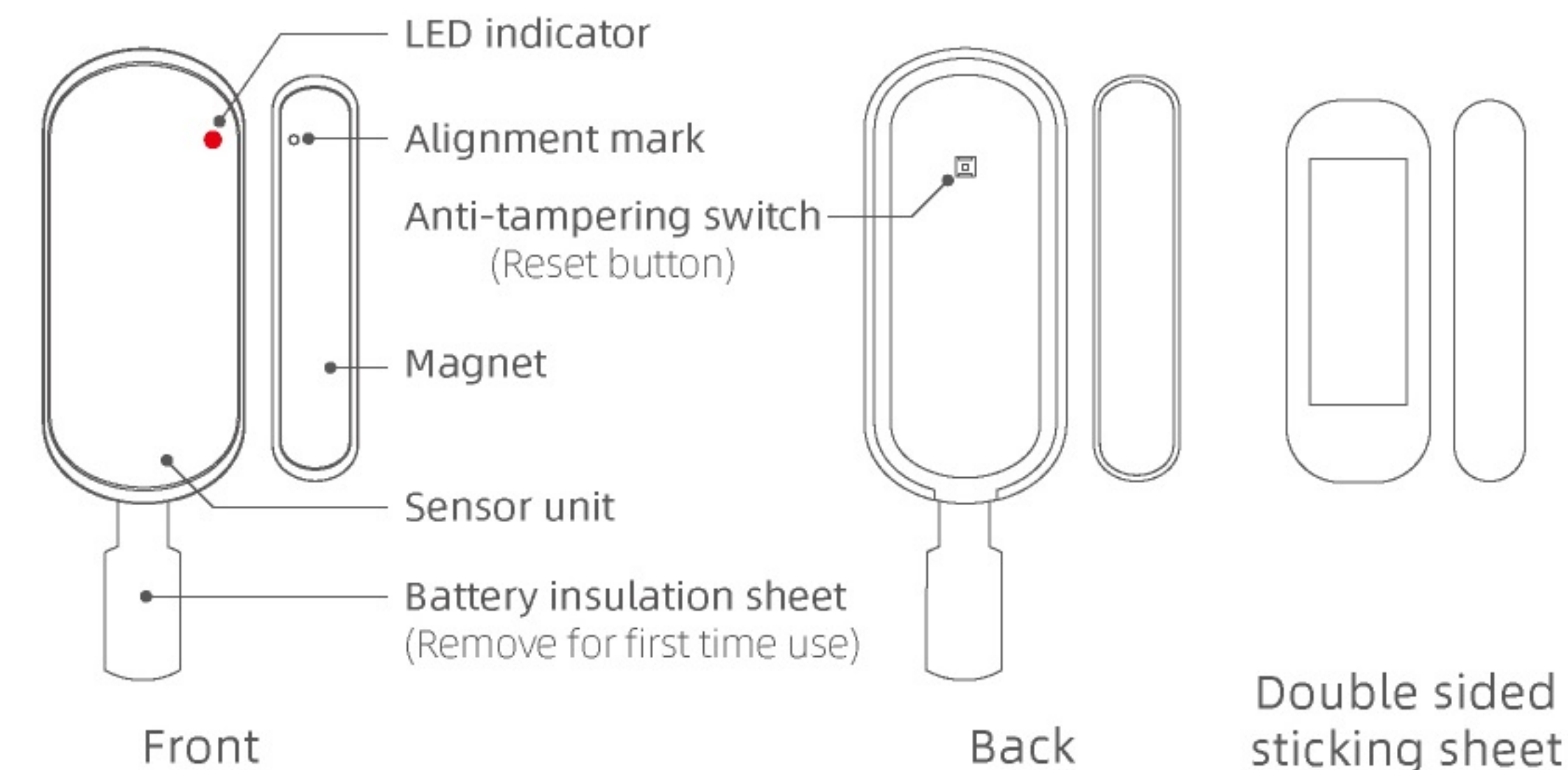


# Quick Setup Guide

Door Sensor



## Overview



### Specifications

Connectivity: 2.4GHz wireless

Battery: CR2450

Est. battery life: 1 year

Working environment: -10°C~55°C, ≤90%RH

### Dimensions

Sensor unit: 72.8x32.3x12.8mm (2.86x1.27x0.50 in.)

Magnet: 64.8x13.7x9.3mm (2.55x0.54x0.37 in.)

### ATTENTION

**DO NOT power off hub during use of sensors - It may cause higher battery consumption**

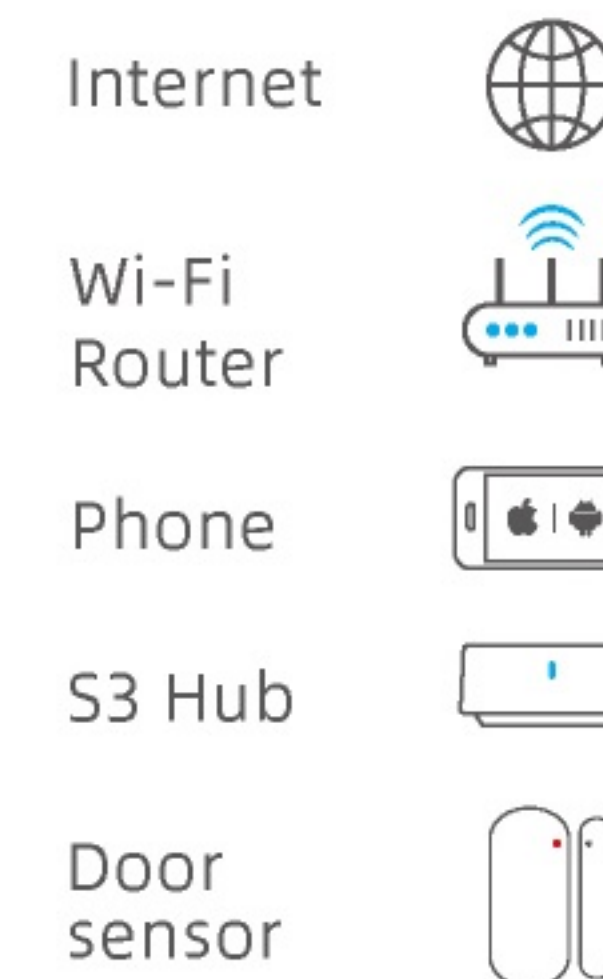
## Indications

| Status              | Indication   |
|---------------------|--|
| Flashes 5 times/sec | The device is in pairing mode<br>The pairing mode will last only for 15s for power saving. Please finish pairing in 15s, otherwise a manual reset is required. |
| Flash once          | Door/window is opened/closed, or Anti-tampering switch is triggered (sensor might be removed)  |

### Reset for Pairing Mode

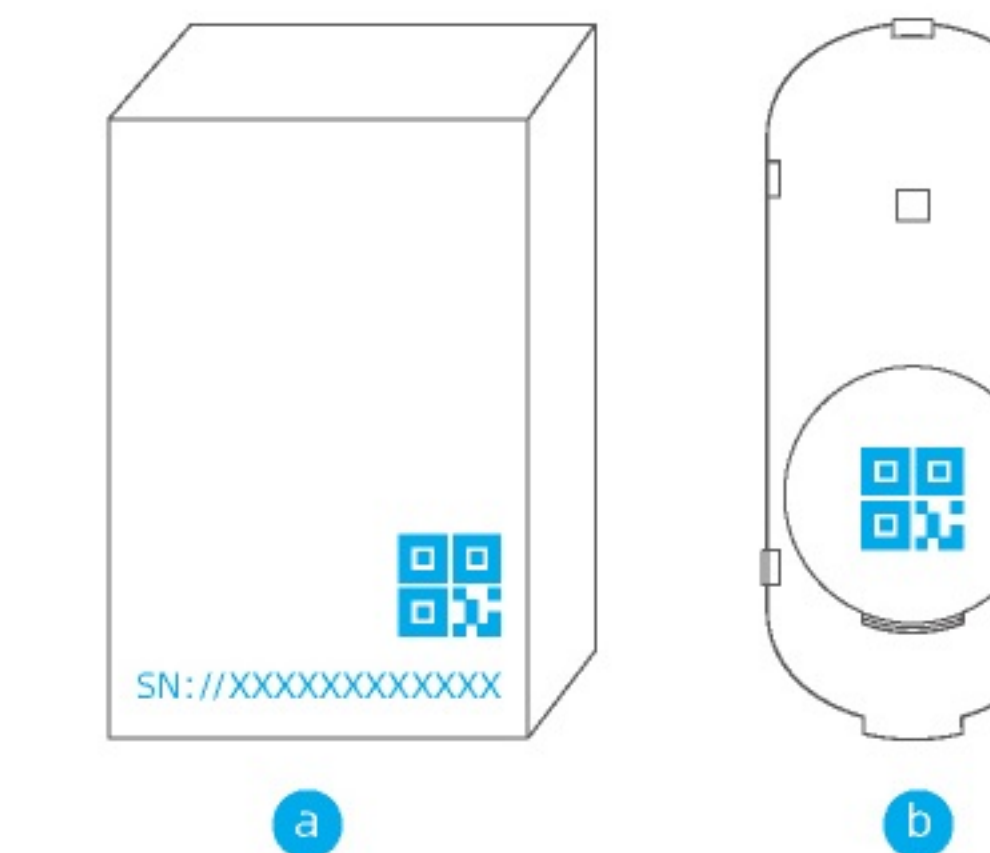
- The device will be in pairing mode by default in first time use (when the battery insulation sheet is pulled out).
- In case it is not in pairing mode, quickly press the anti-tampering switch for 5 times in 2 seconds until the LED indicator flashes 5 times/sec

## STEP 1 What's required



- A smartphone or tablet running iOS 9.0 / Android™ 4.1 or higher with BroadLink APP.
- A 2.4GHz Wi-Fi network with Internet connection.
- S3 hub already configured in APP (Door sensor requires the hub to be installed and kept online during setup and use).**

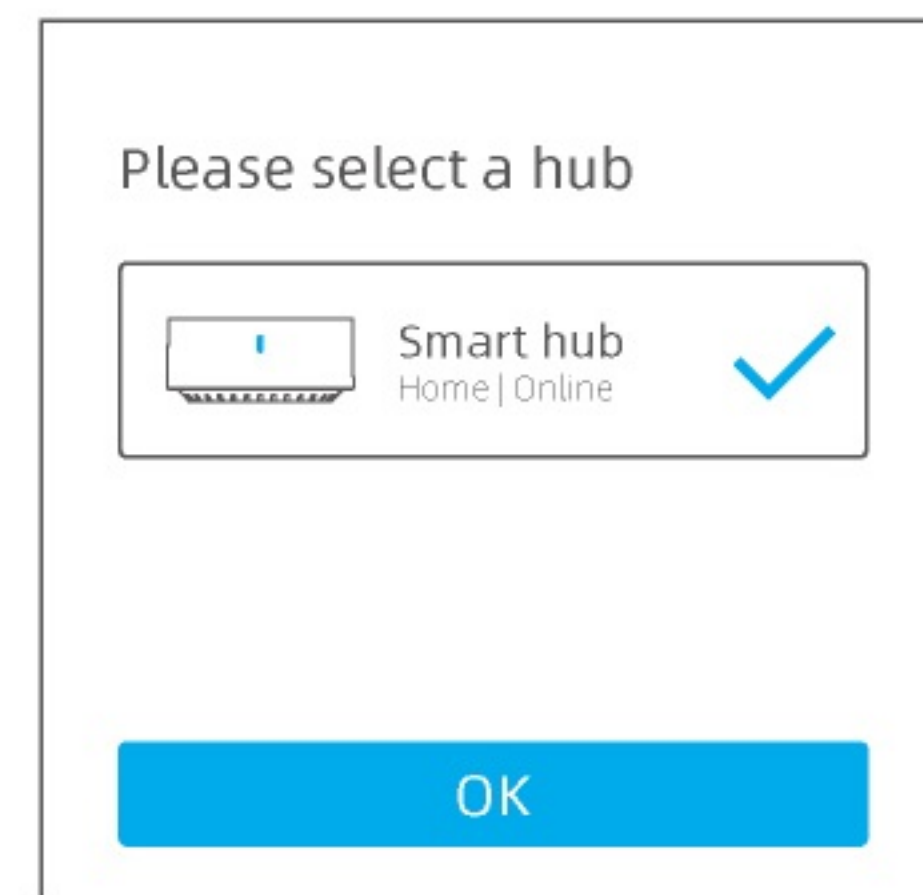
## STEP 2 Scan QR Code



- Open BroadLink APP, tap "+" button and then "Scan QR code".
  - Scan the QR code or input SN from:
    - a) Label on package
    - b) Printed inside on back cover
- \* When you input SN manually, remember to input all characters (SN://XXXXXXXXXX) including "SN://".

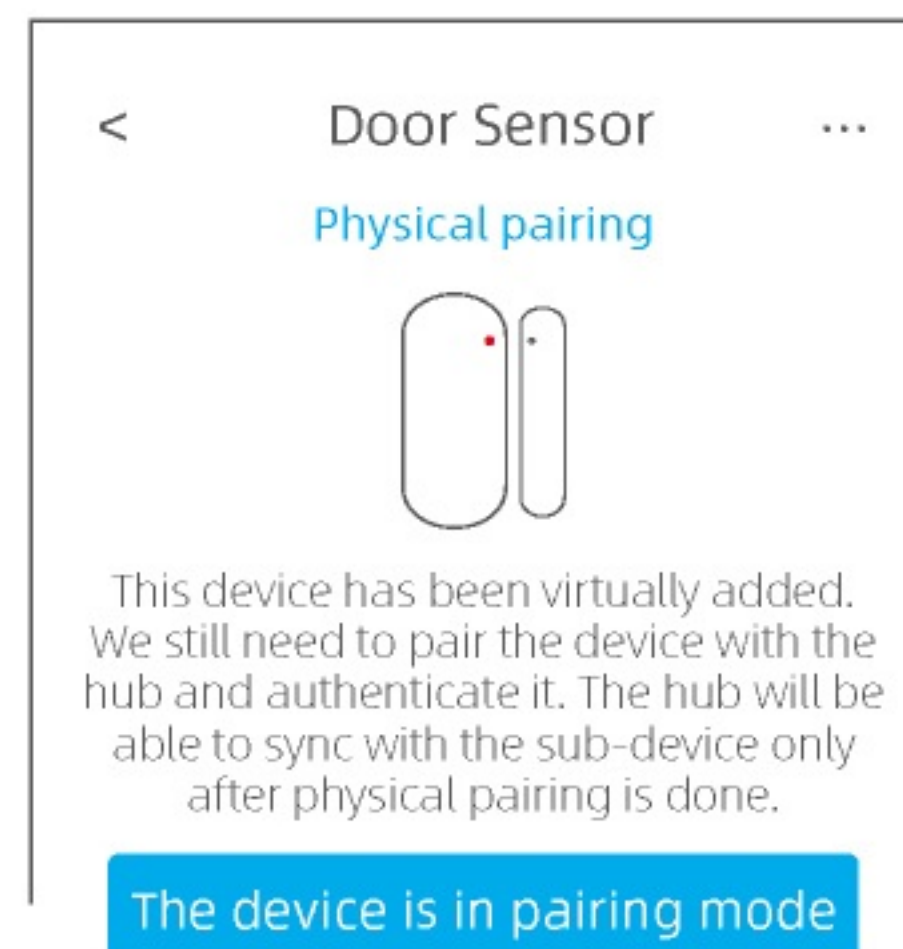


### STEP 3 Add Sensor Virtually




- After scanning, confirm the product information with the picture and name shown in the APP.
- Choose a hub for the sensor. Then choose a room and rename the sensor (if needed).
- The sensor will be added to the hub as a sub-device and tap "I know it" to proceed.

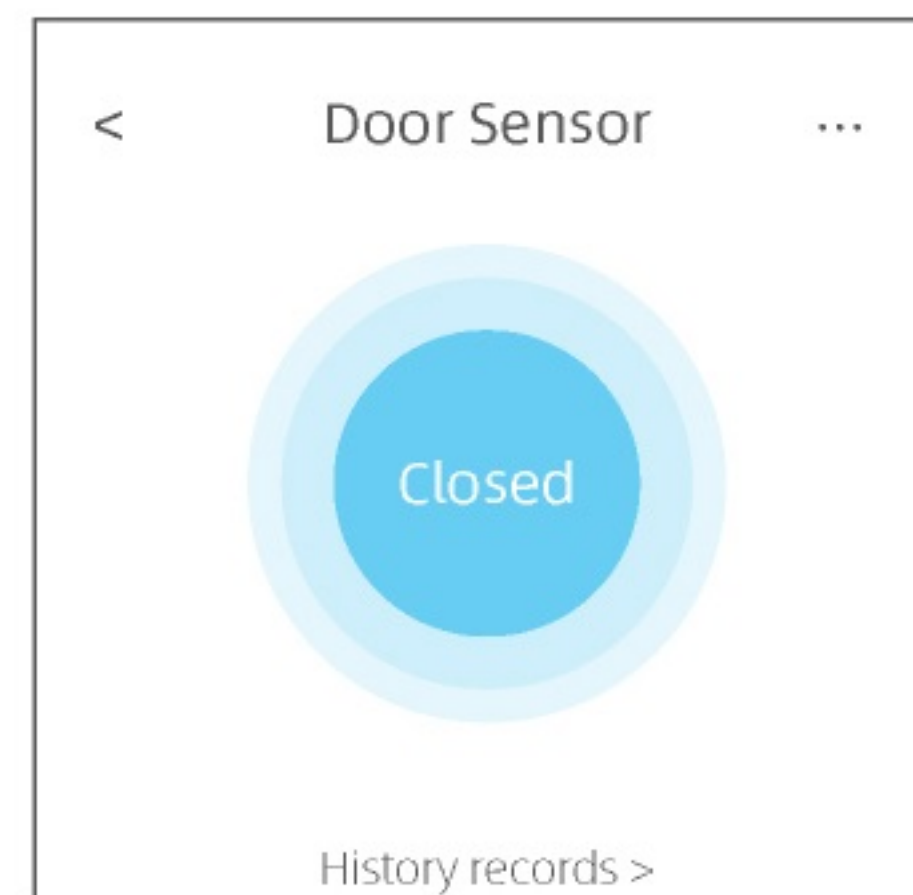
### STEP 4 Pair Sensor Physically



- Tap "Use device now" and the APP will prompt you to continue with physical pairing.
- Make sure the sensor is in pairing mode (LED indicator flashes quickly).
- Tap "The device is in pairing mode" to proceed and complete pairing.

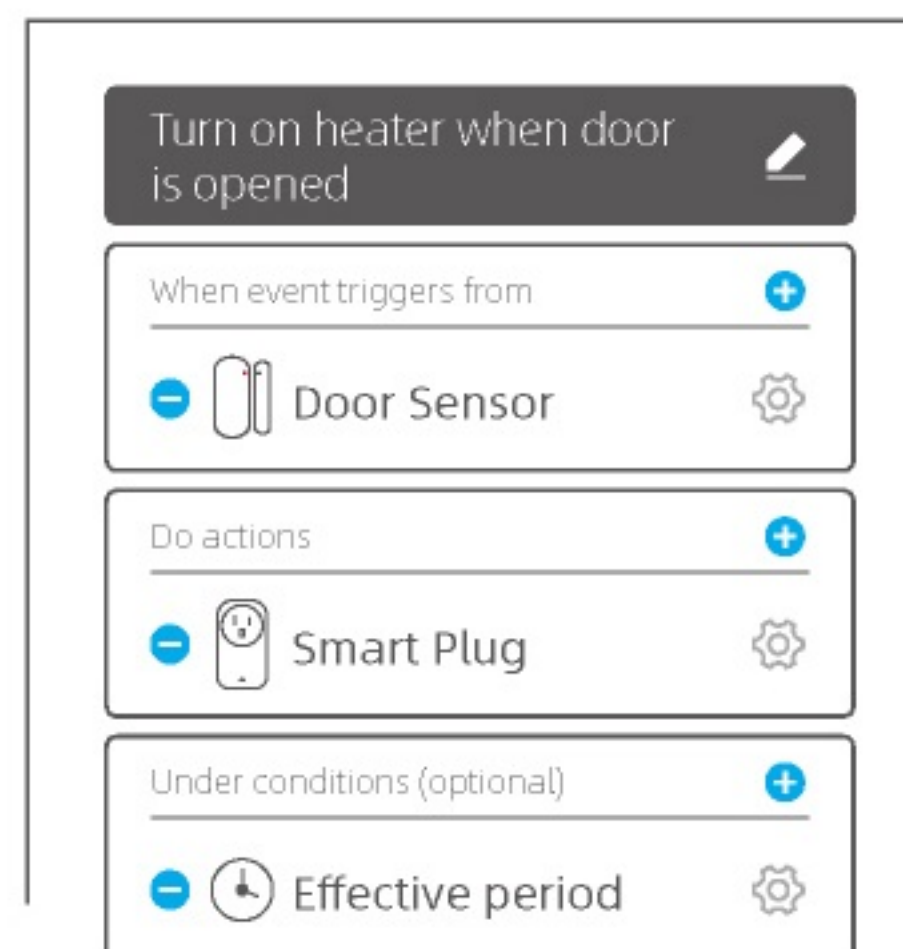
 **The pairing mode will only last for 15s.**

### STEP 5 View Status



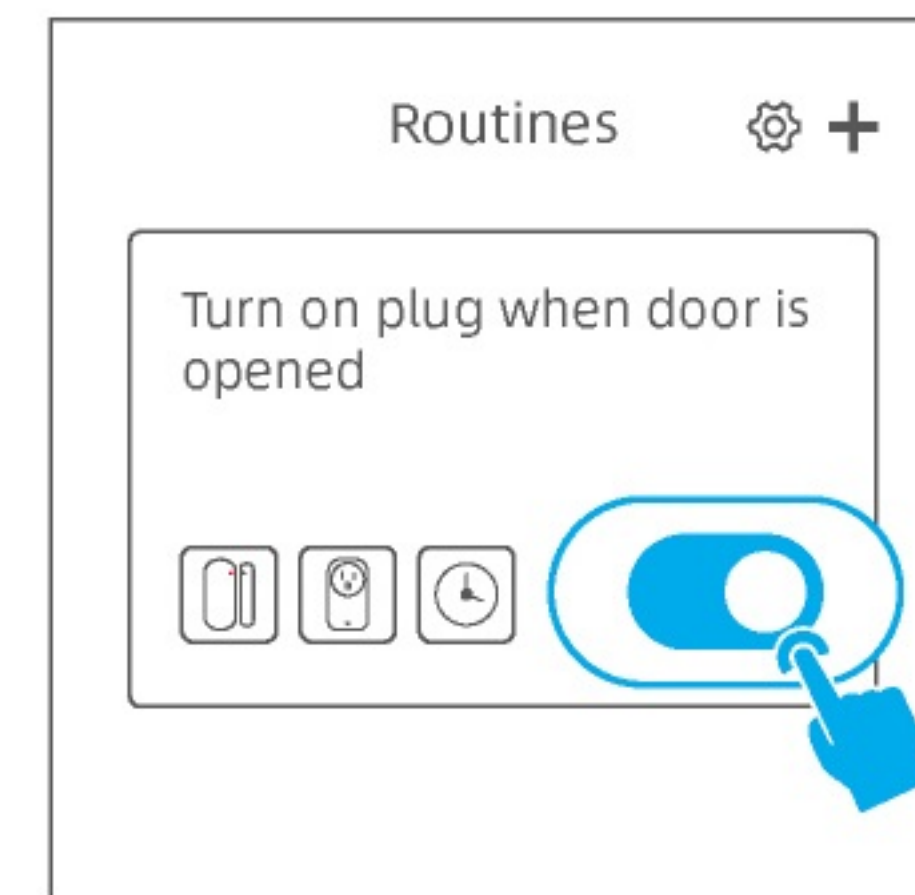
- You can view the "opened/closed" status in device list or device page.
- The device page also shows the state change history.
- You can tap "History records" to view all history records.

### STEP 6.1 Set Routines



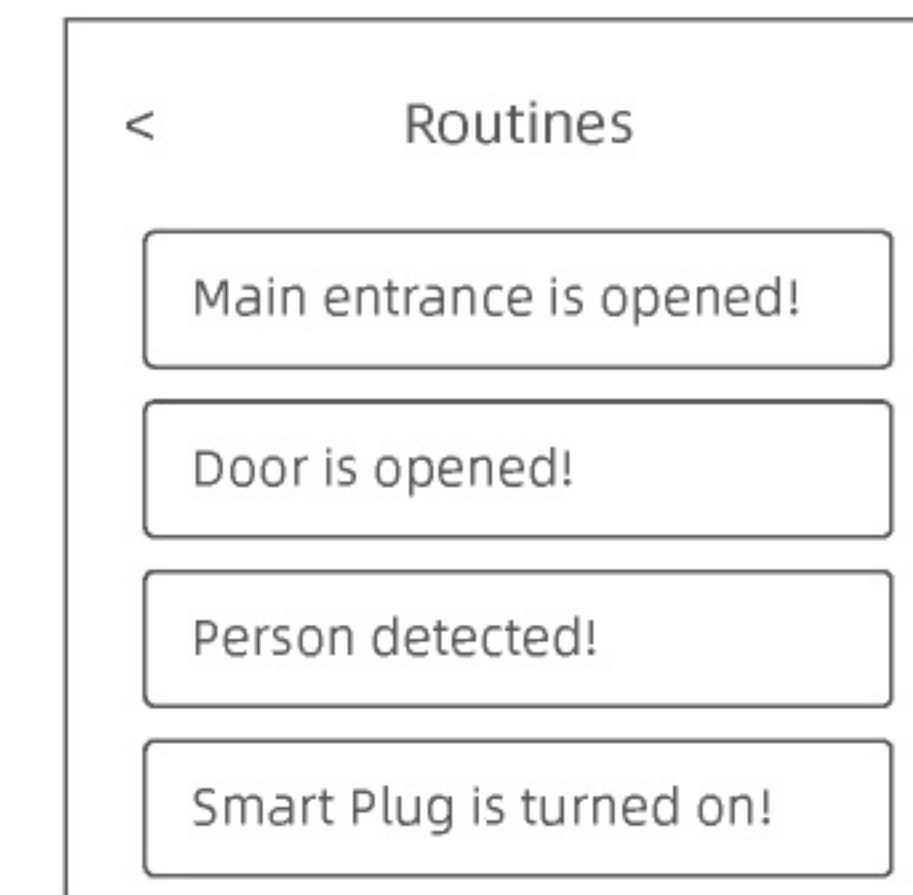
- **\* Make sure you have controllable devices (ex. smart plug).**
- Tap "Routines" tab at bottom in APP's home page and tap "+" to add a routine.
- Tap "+" buttons to add triggers, actions and conditions (support multiple for each) to create your routine.

### STEP 6.2 Set Routines



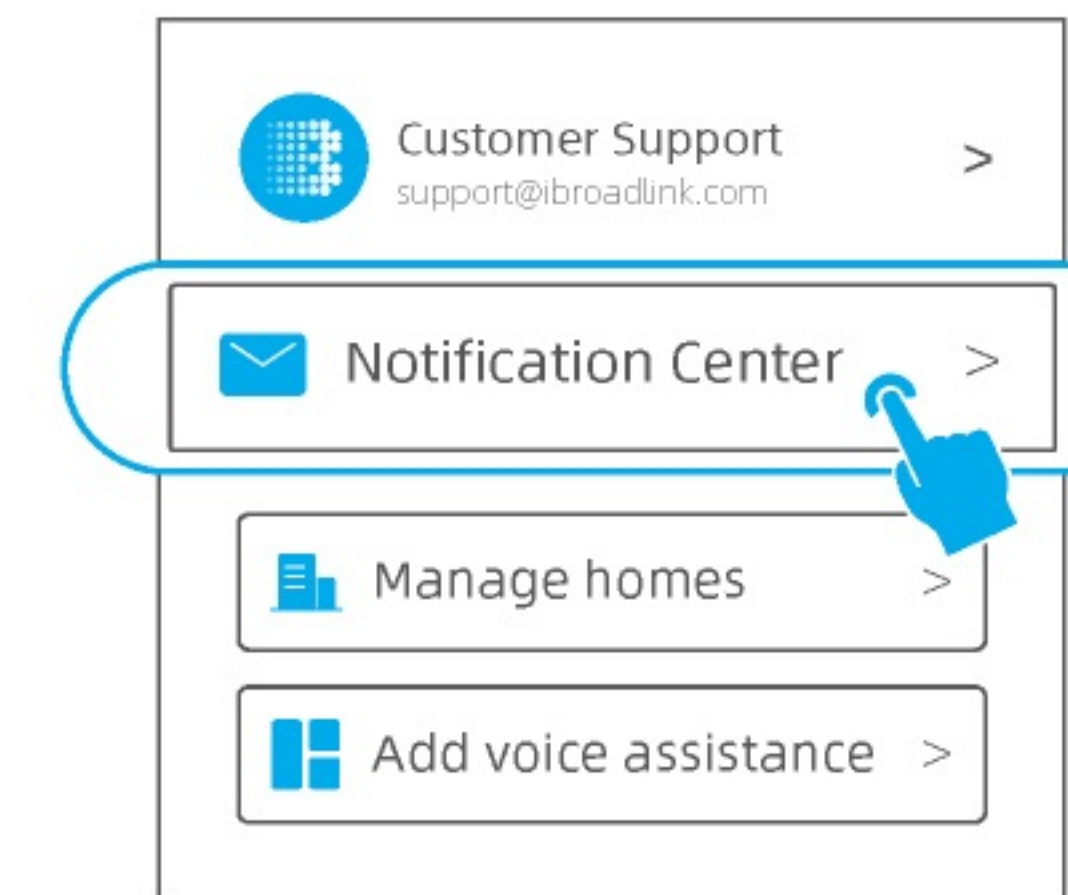
- You can change the background picture and give a name for the routine, then save it to enable the routine.
- You can tap the toggle in routine list to disable/enable it.
- If your country has daylight saving time (DST), you can tap the "⚙️" to enable the DST setting.

### STEP 7 Set Alarm Notifications



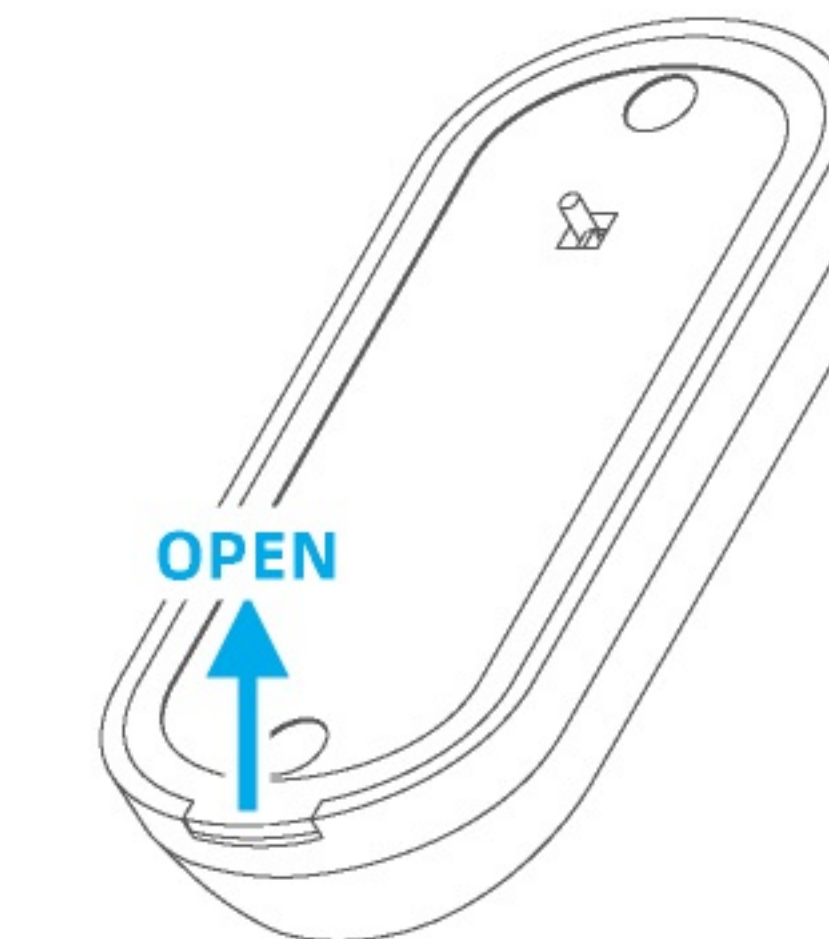
- Tap "..." at top right and enter "Notification setting".
- Customize the text of notification for certain status. When the event is triggered, you will receive a notification on phone without opening the APP.

### STEP 8 Manage Notifications



- The notifications will be also displayed in routine list for easier management and editing.
- Go to "Me" > "Notification Center" to view notification history
- If you add "Push notification on phone" as an action in routine, you will also be notified when the routine is executed and check the history in "Notification Center".

### Change Battery



- Open the back cover from bottom of sensor unit to take out battery and change new one.
- **\* Battery must be changed asap if "Low battery alert" shows on phone, otherwise the device may stop working unexpectedly.**